



Farming perspectives

Yorkshire NFM Community of Practice

20 February 2023

20 February 2023

Non-confidential - Standard

Agenda

10:15- 11:50 – Presentations and panel discussion with

- NFU Rep – James Copeland
- Upper Aire Project – Iain McDonell
- Yorkshire Wildlife Trust – Suzie Knight
- Natural England – Mark Phillips

11:50 – 12:00 – Future sponsorship of the NFM Community of Practice

12:00 – 13:00 – Lunch

13:00 – 14:00 – Discussion with local farmers

14:00 – 14:45 – Group discussion and feedback

14:45 – 15:00 – Wrap up

James Copeland

National Farmers Union



Habitat improvement supported by the

Upper Aire Habitat & Land Management Improvement Project

For more information contact:

Phil Lyth Yorkshire Farming and Wildlife Partnership
☎ 0771 3333 170
✉ phil.lyth@farmingandwildlife.net

Don Vine Yorkshire Wildlife Trust
☎ 07818 403138
✉ don.vine@ywt.org.uk



A Partnership Project supported by:



Iain McDonnell

Senior Environment Officer
Agriculture (Yorkshire)



Upper Aire Project

Commenced 2011 –

Yorkshire Wildlife Trust

FWAG/Yorkshire Farming and Wildlife Partnership

Aire Rivers Trust

20 February 2023

Non-confidential - Standard

History - Upper Aire Habitat and Land Management

2011 – Water Framework Directive driver

19 Waterbodies in the Upper Aire 11 waterbodies were failing to meet *Good Ecological Status*.

Drivers:

diffuse sources of sediments

phosphates

physical modification.

Other suspected reasons for failure eg leaking septic tanks on farm holdings

Aim to address failures by working with landowners and partners

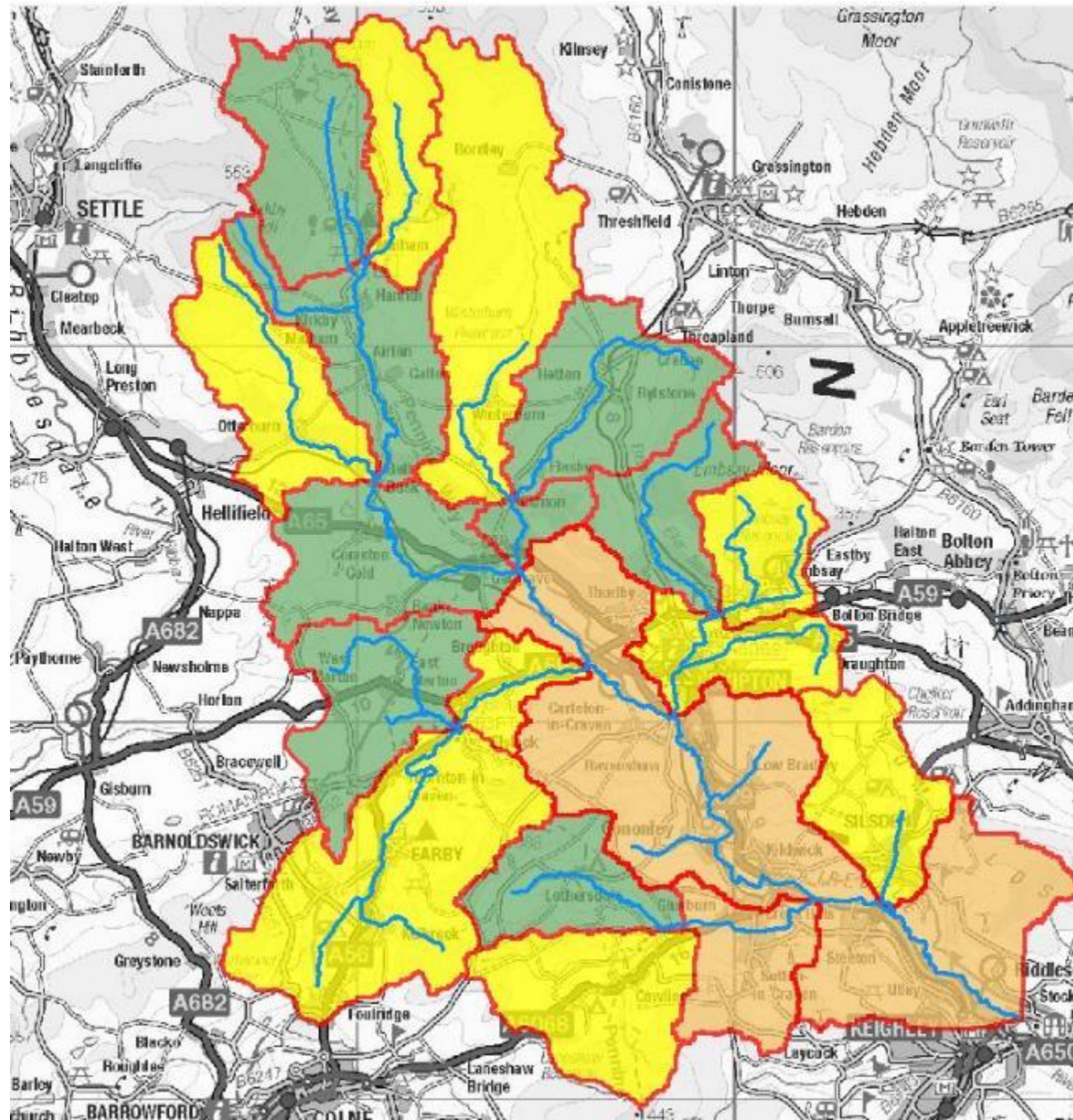
improve agricultural practices,

manage diffuse agricultural pollution

restore physical habitats

control invasive non-native plants.

In essence; slow the flow, address land management, WwNP..... Ahead of its time?



Reasons for failure

Phosphate
Sediment
Habitats – bank erosion
Cooling water

Failing waterbodies	Status	Failing elements	length
GB104027063090 Otterburn Beck from Source to River Aire	Moderate	Fish	18.48km
GB104027063031 Aire from Eshton Beck to Gill Beck	Poor	Fish (mod) Phytobenthos (poor)	118.21 km
GB104027062980 Earby Beck from Source to Langber Beck	Moderate	Fish Phosphate (both moderate)	35.77km
GB104027063000 Earby Beck from Langber Beck to River Aire	Moderate	Fish (moderate)	5.98km
GB104027062930 Eastburn Beck from Source to Lothersdale Beck	Moderate	Fish	18.98km
GB104027062960 Eastburn Beck from Lothersdale Beck to River Aire	Poor	Fish (moderate) Phytobenthos (poor)	12.03km
GB104027063120 Eshton Beck from Source to Flasby Beck	Moderate	Mitigation measures assessment	34.57km
GB104027063060 Haw Beck from Source to Eller Beck	Moderate	Mitigation measures assessment	10.07km
GB 104027062990 Silsden Beck from Source to River Aire	Moderate	Fish Phosphate (both moderate)	14.69km

Objectives of the UAP

Objective 1	To locate and map diffuse sources of agricultural pollution, particularly sediment, in the 6 or 9 waterbodies failing for fish and identify actions to solve the problem.
Objective 2	To support and encourage farmers to take up improved agricultural practices and grant schemes that will reduce pollution from agriculture that is contributing to ecological status failures.
Objective 3	To locate and map river-side stands of invasive non-native plants that contribute to bank-side erosion and sediment input and initiate a collaborative control programme through setting up an Invasive Non-native Species Forum .
Objective 4	To trial methods for addressing diffuse agricultural pollution, including the use of buffer strips to limit sediment input, and to provide a demonstration site for buffer zone management.
Objective 5	To identify a costed programme of capital works to address diffuse sources of agricultural pollution and physical modification of habitats (e.g. buffer strip fencing, erosion control through riparian habitat creation).

Demonstration sites

Need to identify significant impacts

Need to engage in the catchment

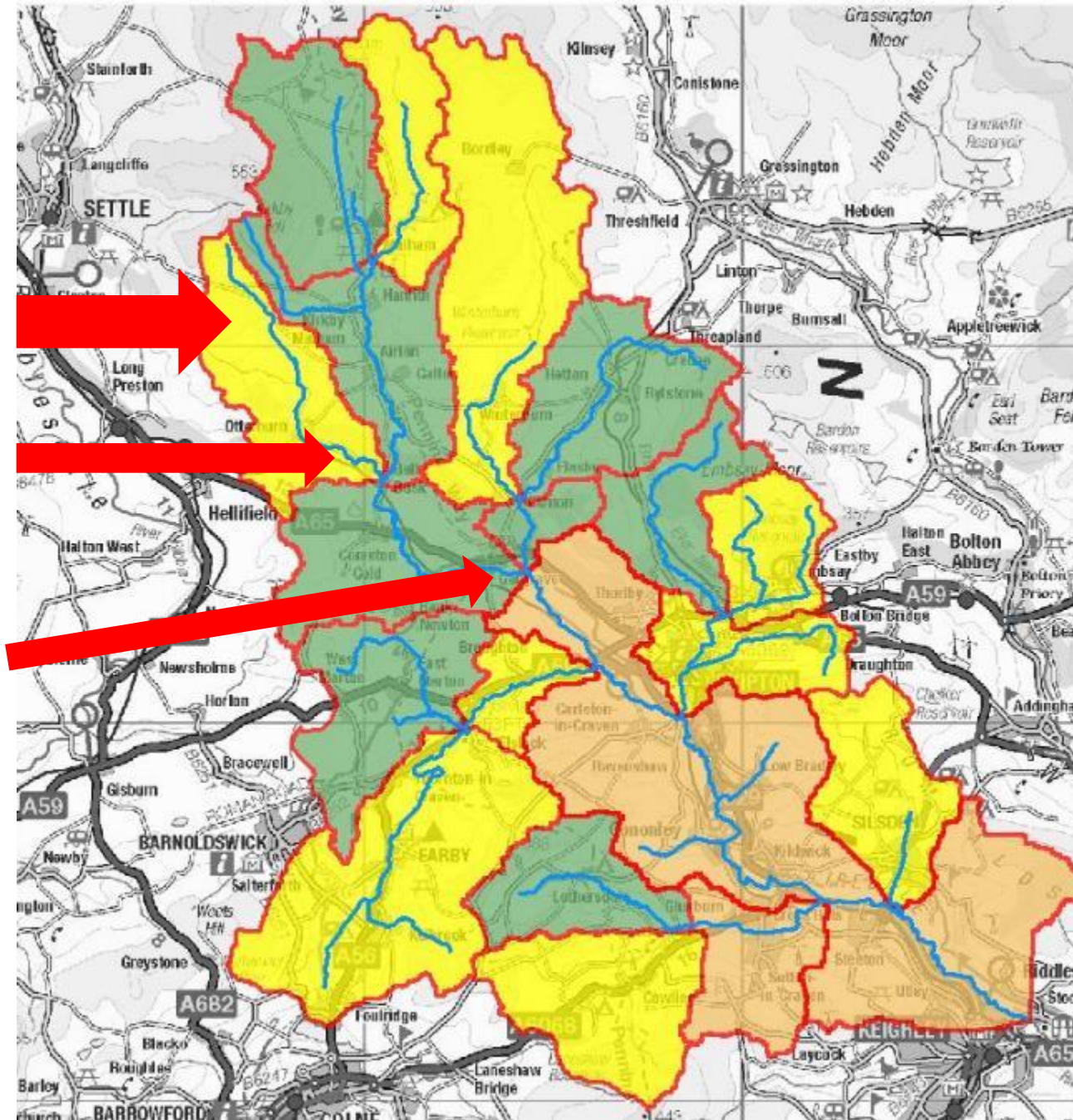
Had to identify landowners

Required Quick Wins

Crake Moor Farm

Otterburn Hall Farm

Low Green Farm



Before



After





Upper Aire Land Management & Habitat Project Otterburn works – March 2013



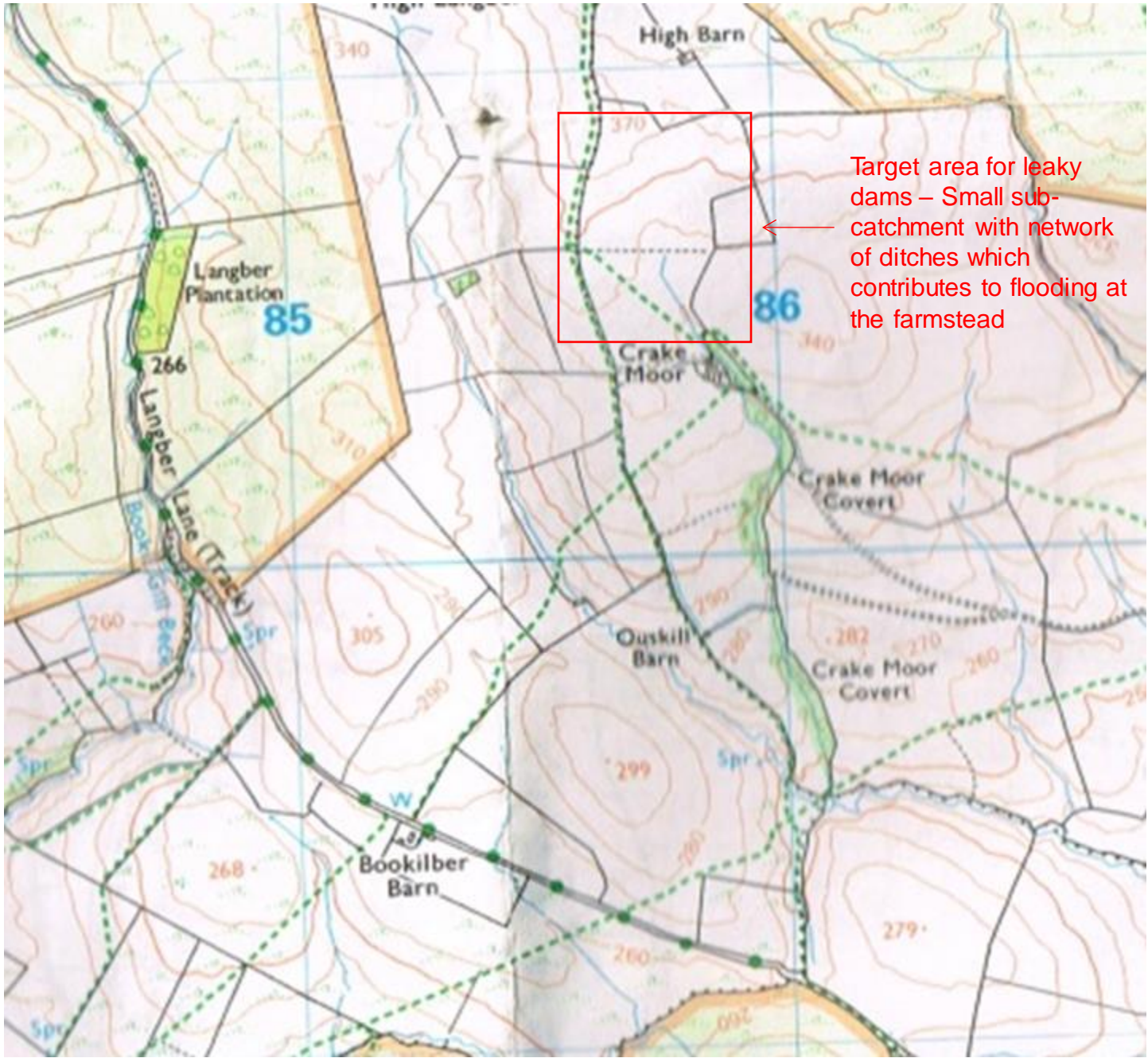
20 February 2023

Non-confidential - Standard









Target area for leaky dams – Small sub-catchment with network of ditches which contributes to flooding at the farmstead

Proposed/ marked locations for leaky dams in ditches (solid blue) and overland flow pathways (dashed blue)

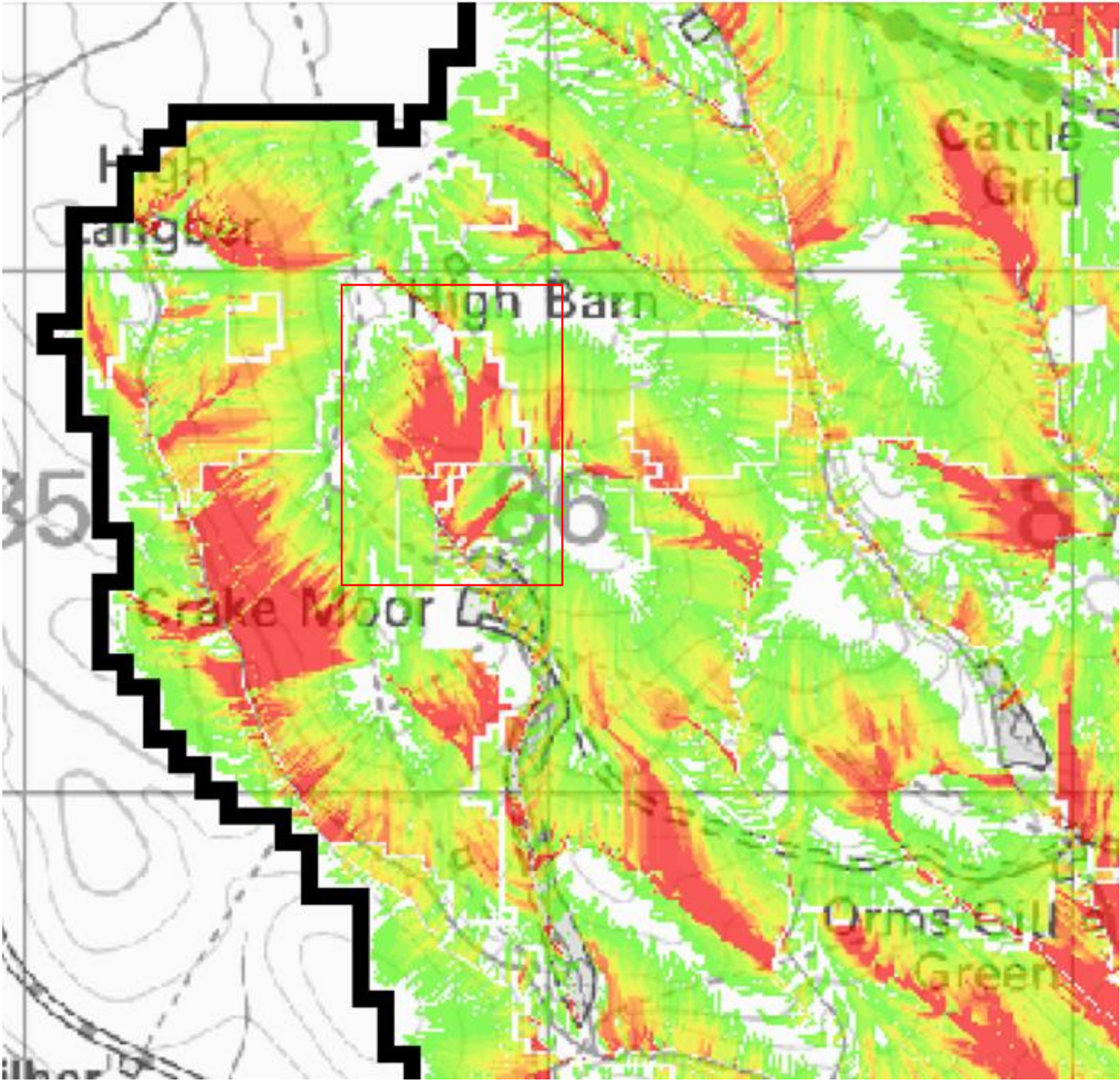
- Total of 15 dams
- Average width around 3m
- Width varies between 2.2 & 5.2m
- Located in “headwater channels” on less steep sections where temporary storage of water upstream can be maximised by channel/ field topography.

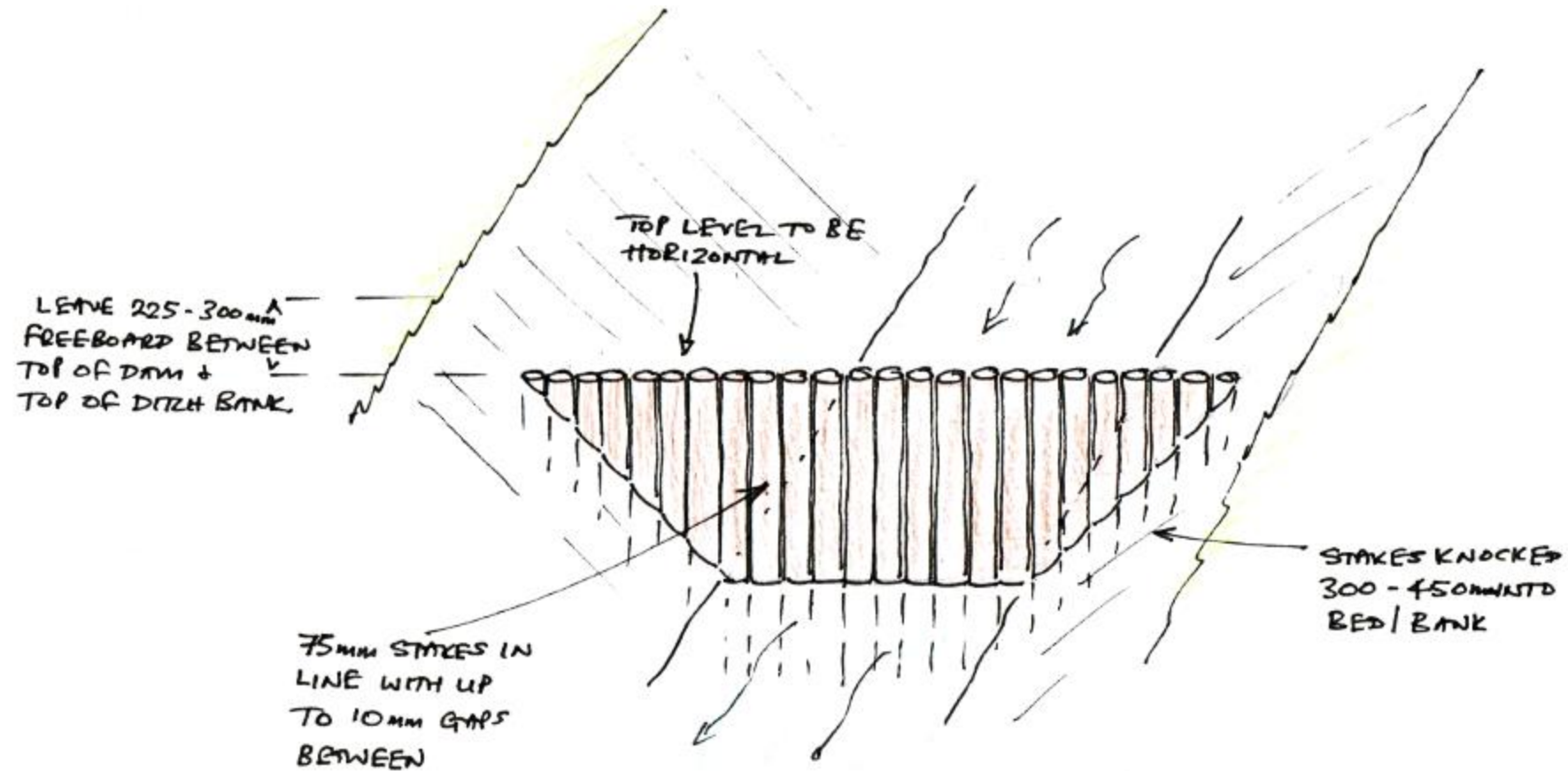
Note: Additional work to be funded on the farm by the project includes gill woodland fencing and creation which will also contribute to runoff attenuation by reducing overland flow and increasing infiltration.

The farmer has agreed to monitor the effectiveness of the dams during/after heavy rain.



Relationship to
SCIMAP data



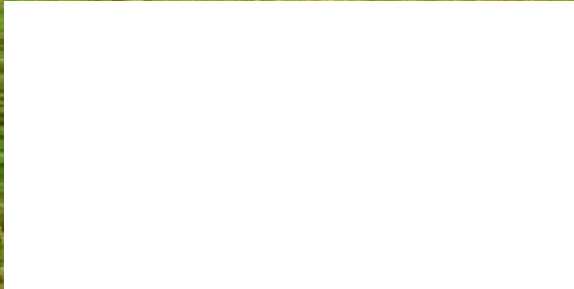


Proposed Specification: Knock in a line of 3-4" posts across the ditch with up to 1cm gap between. Top to be 9"-12" below the top of the ditch bank to allow for overflow. Porosity of the dam can be reduced if necessary in the future by placing material on upstream face (boards, brush). In some areas alternative specifications may be trialled eg/ horizontal planks with gaps between and posts.

Based on the 15 dams marked, 46m length of dam will be required, equivalent to around 550 x 75mm posts allowing for 10mm gap. Because of the limited height of some of the dams/parts of the dams, it will be possible to use half posts in many places.



Leaky Dams Circa 2014





Upper Aire Project since 2011

- *119km of waterbody enhanced*
- *C. £1.5m match funding on £483,000 WEIF (rate of return 2.85:1)*
- *3 full WFD classification improvements (2 achieving GES)*
- *8 individual WFD classification improvements in a further 6 waterbodies*
- *16 km of stock fencing installed. 9 alternative drinking sources created including bays and solar pumps.*
- *15 fish easements, passes or full weir removals resulting in over 100km of W/C becoming accessible to fish*
- *Over 200 ha of new or enhanced woodland with approximately 120,000 trees being planted*
- *3000 volunteer days given to the project which equates to £144,600 in match funding*
- *In total the amount of match funding, both cash and in-kind has exceeded £1,500,000*
- *Social Enterprise Company established – Ian Butterfield and his volunteers*
- *Ready made delivery team for the Leeds FAS*

In Memory of Don Vine



Upper Aire Project

since 2011 – 2027 at least

Suzie Knight

Yorkshire Wildlife Trust



Mark Phillips

Natural England

The logo for Natural England, featuring the words "NATURAL" and "ENGLAND" stacked vertically. "NATURAL" is in white uppercase letters on a green background, and "ENGLAND" is in purple uppercase letters on a green background. The logo is positioned on the right side of the slide, partially overlapping a large blue arrow graphic pointing towards the top right.

NATURAL
ENGLAND

Panel Discussion



The Yorkshire NFM Community of Practice

Future Sponsorship Avenues



Where are we now...

Mott MacDonald has taken a leading role in organizing and hosting 4 quarterly meetings of the COP

The quarterly meetings are supported and guided by the Steering Group and iCASP

This co-hosting model is an initial 12-month trial to extend the lifespan of the COP

The hope is that the existing funding coupled with sponsorship or co-hosting models going forward will continue to extend the lifespan of the COP.

What we are looking at...

Open bidding for sponsorship(s) to be delivered
in the same way as currently with more defined
ToR for sponsors

Revisiting alignment of the steering group, ICASP
support, and co-host roles for most effective
collaboration

Open bidding with multiple sponsorship options

Monetary
contributions

In kind contribution
via time to host
events

Accreditations/
affiliations

Tools for COP use,
newsletter/webinar
program

Cross promotional
options

Further propositions ...

- Looking into the possibility of a Levy-funded or LCC/RFCC supported post/ secretariate

Support CoP network and it's activities

Gather and provide measurable impact data to potential sponsors

Help us to provide strategic overview of NFM

Could support running Yorkshire NFM Library