



Funding for NFM The role of the RFCC

Discussion paper on unlocking nature based solutions

Geoff Roberts (RFCC Independent Member)
Matt Hodkin (Environment Agency FCRM Programme Manager)

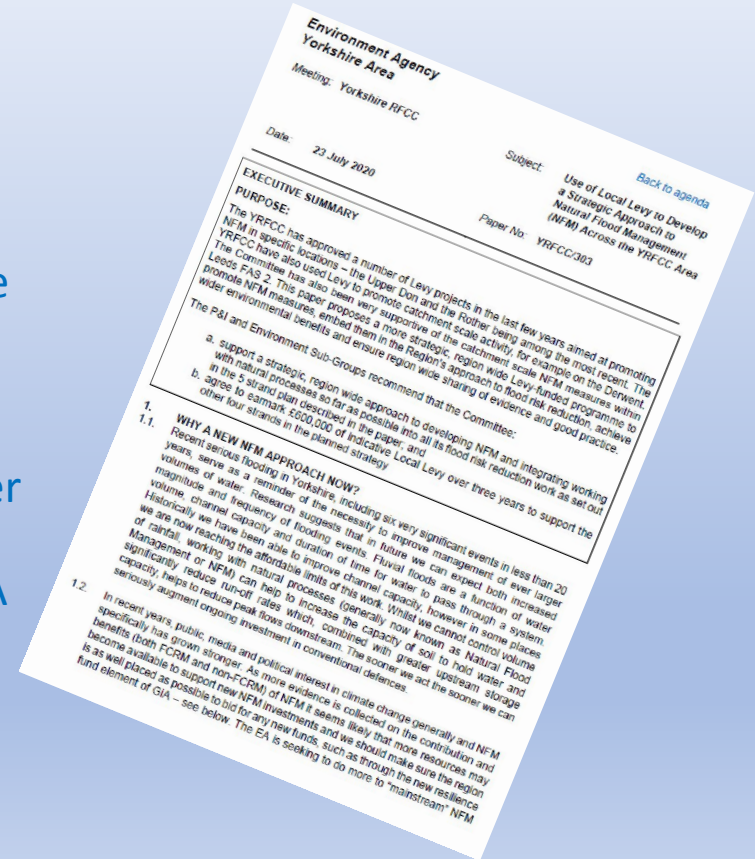
All of this in 15 mins...

- A brief bit of context
- What RFCC agreed
- How it has been used so far
- Possibilities for the future
- Getting your hands on the money



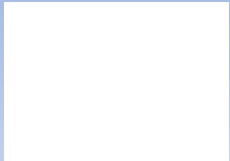
Local Levy? RFCC? Environment Committee?

- We wanted:
 - To promote NFM so that it becomes business as usual
 - Yorkshire to become a Centre of Excellence for NBS/NFM
 - Promote exploration of NFM in lowlands and urban areas
 - To stimulate 'concrete mongers' to consider greener options more seriously
 - Provide top-up funding for NFM where GiA was a bit short



Where has the money gone?

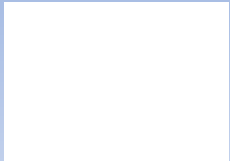
- What has happened:
 - Massive national support has changed the game – in theory
 - Funding formula makes it much easier to fund NFM
 - Community of Practice funded
- Nobody has asked for any money!



Where might it go?

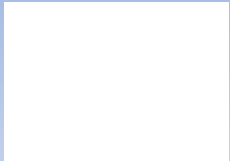
- Funding or topping up marginal schemes
- Support for development of an innovative funding option
- Monitoring

Make sure your local authority and EA colleagues know about this fund



What projects can apply for Local Levy?

- The Environment Agency raises Local Levy from Lead Local Flood Authorities in the Regional Flood and Coastal Committee's area, but must obtain the consent of the RFCC before issuing the Levy.
- Bids must be made by a Risk Management Authority:
 - Environment Agency
 - Lead Local Flood Authority
 - Internal Drainage Board
- Two **essential** criteria that all schemes **MUST** meet:
 - Flood risk/coastal erosion benefits
 - Value for money
- Four desirable **added value** criteria:
 - Wider environmental/recreational benefits
 - Benefits local/regional economy
 - Levers in additional investment
 - Actively engages communities



Who decides and when?

- There is a cycle of review and approval meetings through the year
- Bids over £500,000 will also have a peer review stage
- Approval onto the programme gets an *allocation* of funds. A business case then needs to be submitted to the Environment Agency and approved before funds can be claimed

EXECUTIVE SUMMARY AND ASSESSMENT METHODOLOGY RESULTS

Please refer to guidance before completing this proforma.

Executive Summary
Provide a brief summary of the project here and describe why the Levy is being requested. Aim to keep this to 1000 characters.

Assessment Methodology Results

Project Name	Project Number	Project Stage	Project Status	Project Location	Project Description	Project Summary	Project Details

Assessment Methodology Results

Criteria	Score	Comments
Project Description		
Project Location		
Project Status		
Project Summary		
Project Details		

Assessment Methodology Results

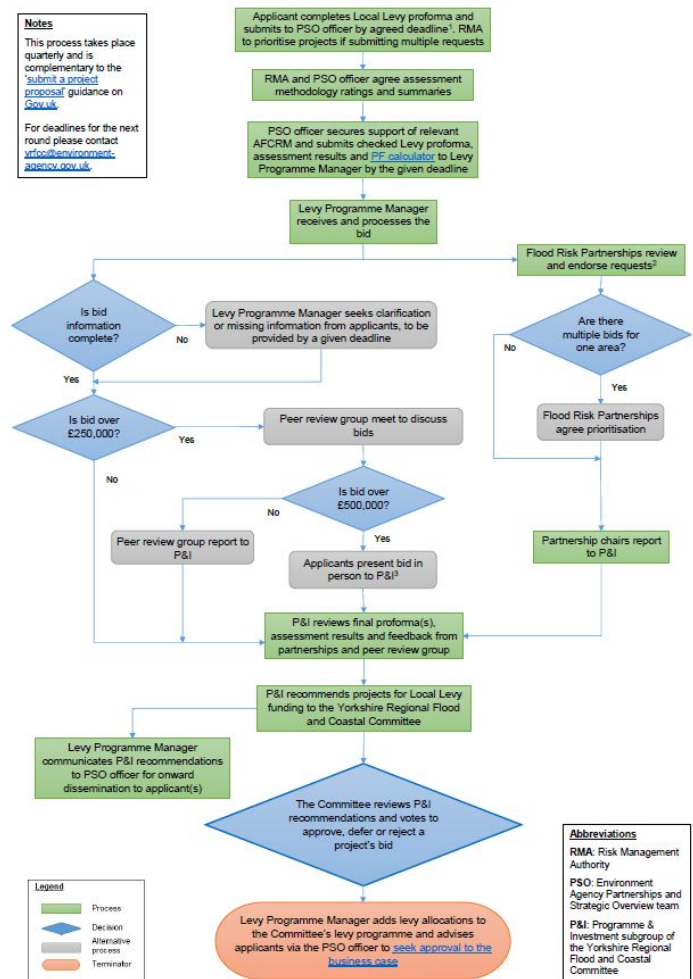
Criteria	Score	Comments
Project Description		
Project Location		
Project Status		
Project Summary		
Project Details		

Notes

This process takes place quarterly and is complementary to the ["submit a request proposal" guidance on Gov.uk](#).

For deadlines for the next round please contact yrfo@environment-agency.gov.uk.

Local Levy Bid and Allocation Process Flowchart



Abbreviations

RMA: Risk Management Authority

PSO: Environment Agency Partnerships and Strategic Overview team

P&I: Programme & Investment subgroup of the Yorkshire Regional Flood and Coastal Committee

¹PSO to agree initial deadline with RMA ahead of given Levy Request deadline
 ²This will be the original version as submitted to the Levy Programme Manager
 ³Applicant will be formally invited to the meeting by the YRFCC Secretariat

What questions do you have?

