

Invasive non native species: Floating Pennywort (*Hydrocotyle ranunculoides*)

Floating Pennywort is a creeping water plant with shiny kidney-shaped leaves (1-7cm across) on fleshy stems and green flowers without petals. While it can be dispersed by seed, here in the UK it is spread by vegetative fragments which can be accidentally spread on clothes or machinery. Floating Pennywort is widespread in still or slow-moving water in South and East England



Floating Pennywort causes a range of problems as it spreads:

Environmental impact: it grows up to 20cm a day and can form dense mats of plants that outcompete native plants for light, disrupt animal movements, and alters nutrient and oxygen levels in water.

Health and social impact: dense mats prevent access for fishing, recreation and water sports.

Economic impact: it can disrupt navigation, increase flood risk and damage water works by blocking pipes and pumps.

Treatment of Floating Pennywort in the Thames alone is currently £700,000 a year.

Floating Pennywort is not yet established in Yorkshire: good biosecurity can prevent its arrival and spread

Biosecurity: you can help stop the spread of invasive non native species, which can cause problems and are expensive to treat, through the following actions:

CHECK your equipment, clothing and footwear

CLEAN everything thoroughly, use hot water if possible

DRY everything, as some species can survive for up to two weeks in damp conditions

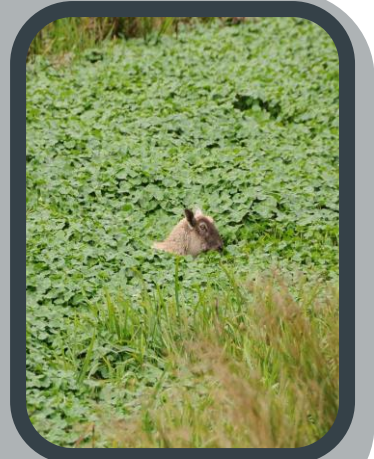


Image credits: Snowdonia National Park Authority, GBNSS, Trevor Renals



UNIVERSITY OF LEEDS

