

# The story



The Cumbrian Catchment Pioneer is one of four Pioneer projects commissioned nationally by DEFRA to test and trial approaches under the principles of the Government's 25 Year Environment Plan. Each Pioneer is based upon a different environmental context – ours being Catchments. The programme has been ran from 2016 - 2020. The following summary provides an overview of the Catchment Pioneer vision, the Pioneer objectives and the projects undertaken. The Catchment Pioneer was led by the EA with the support of a range of organisations operating through the Cumbria Strategic Planning Steering Group.

# Objectives

## DEFRA

Testing new tools and methods as part of a Natural Capital Approach

Pioneering and 'scaling up' the use of new funding opportunities

Demonstrating a joined-up, integrated approach to planning & delivery

Grow our understanding of what works, share lessons best practice

## Cumbria

1) Inform future farming and land management strategies

2) Catchment scale systems approach  
a) integrated delivery  
b) linked to Natural Capital and investment

3) Place based decision making – engaging communities in sustainably managing the environment within catchments

# The Cumbria Vision

## Cumbria's environment is its lifeblood

People are key, whether they live, visit or work in Cumbria. Through collaborative engagement we will create a common appreciation and value of natural, social, cultural and economic capital at a catchment scale. This will drive more effective, long term community enabled delivery of a cleaner, greener and healthier environment.



### To do this we will:

- Champion a joined up, systems approach to decision making, in the management of land and water in catchments.
- Be resourced by more efficient, and diverse public, private and voluntary investment.
- Test innovative tools and approaches that are inclusive of land managers, suppliers and beneficiaries of natural capital, to create a resilient environment that benefits communities and the economy.
- Collaborate with and between partnerships to deliver multiple benefits.

### Hypothesis:

Can we maximise natural, social, cultural and economic capital (collectively or individually) through an emphasis on water management within catchment decision making tools?



## Cumbria Catchment Pioneer – Demonstrator Locations



### Catchment scale systems approach to integrated delivery

Petteril and Ullswater Natural Infrastructure Scheme

Windermere

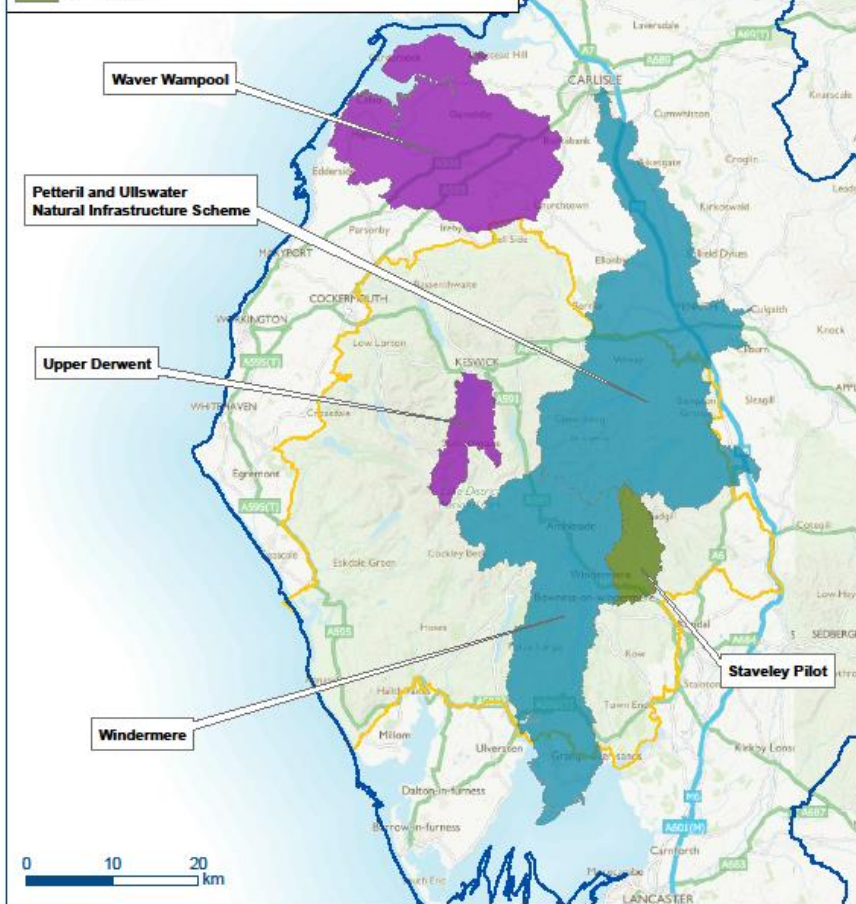
### Inform future farming and land management strategies

Upper Derwent

Waver Wampool

### Place based decision making – engaging communities in sustainably managing the environment within catchments

Staveley Pilot



Cumbria and Lancashire Area (CLA) LDNPA Boundary

© Crown Copyright, Aeris copyright, aerial database rights 2010.  
© Ordnance Survey 2010. All rights reserved. Ordnance Survey Licence No 100024128

# Demonstrator Locations

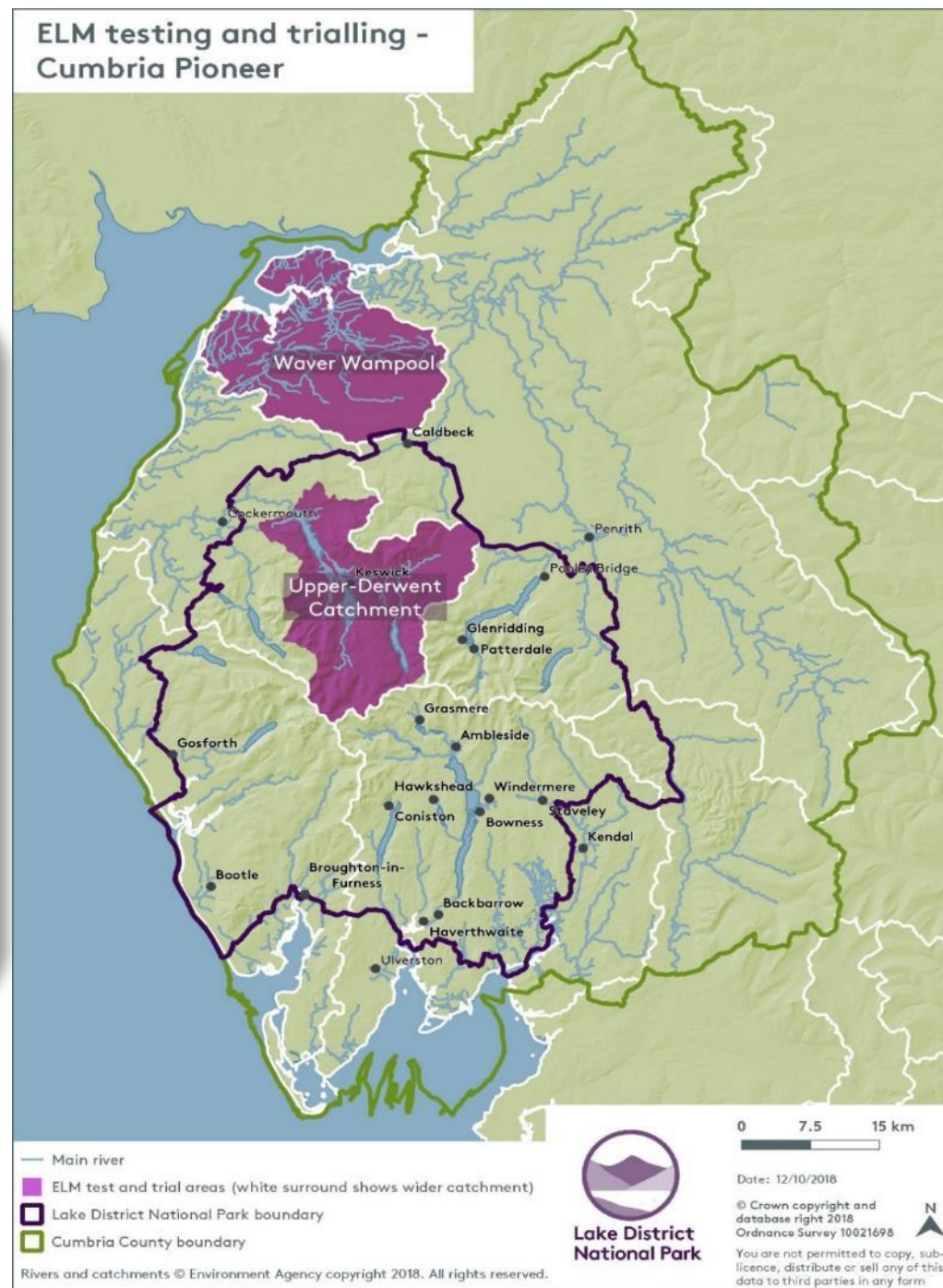
# Environmental Land Management

Cumbria's Test and Trials





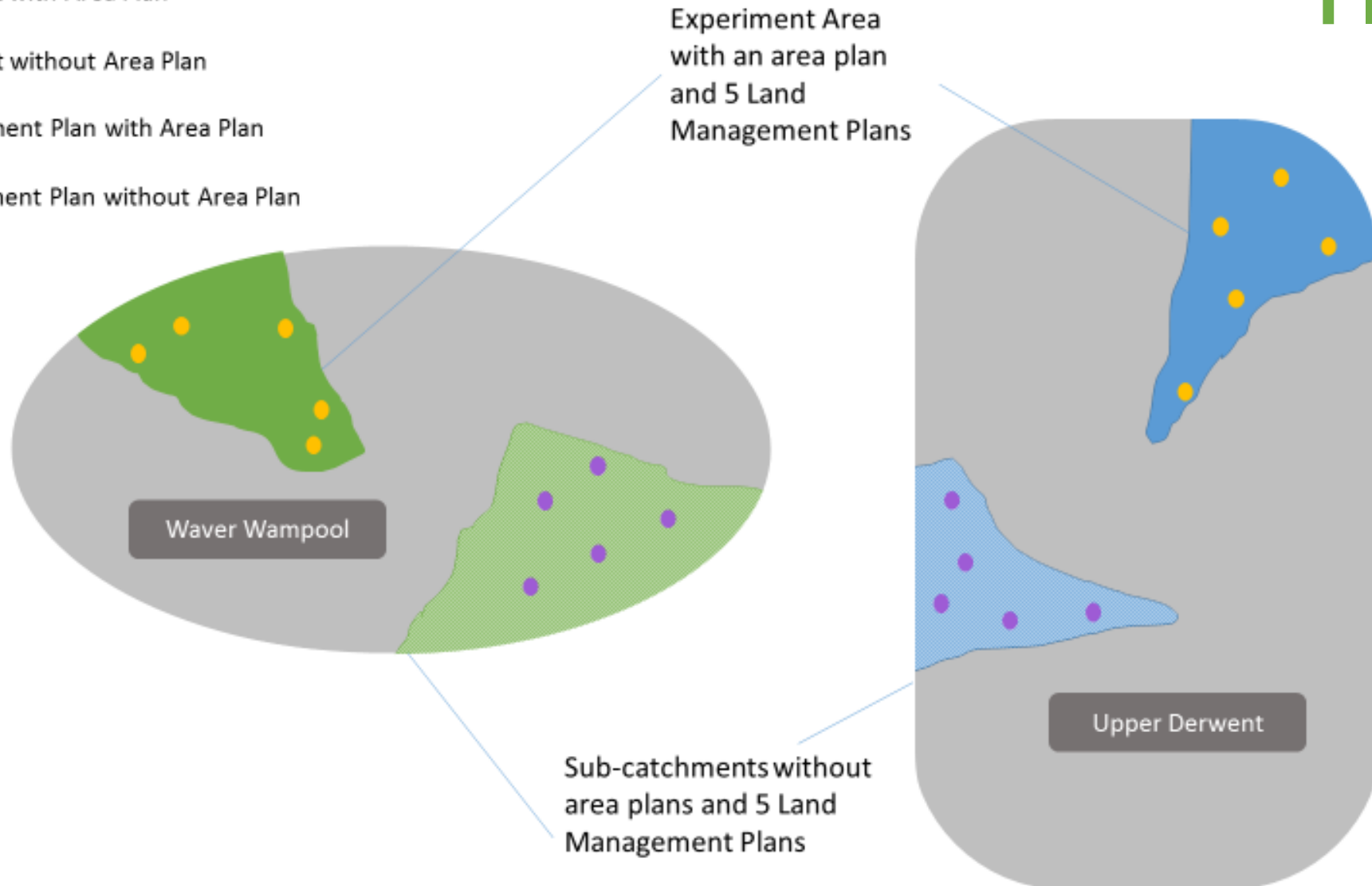
- 2 contrasting locations with different farming practices, different landscapes and varying land tenures.
- These locations will allow testing in 2 very different environments



# ELM Locations

# Land Management Plans & Area Plans

- Sub-catchment with Area Plan
- Sub-catchment without Area Plan
- Land Management Plan with Area Plan
- Land Management Plan without Area Plan



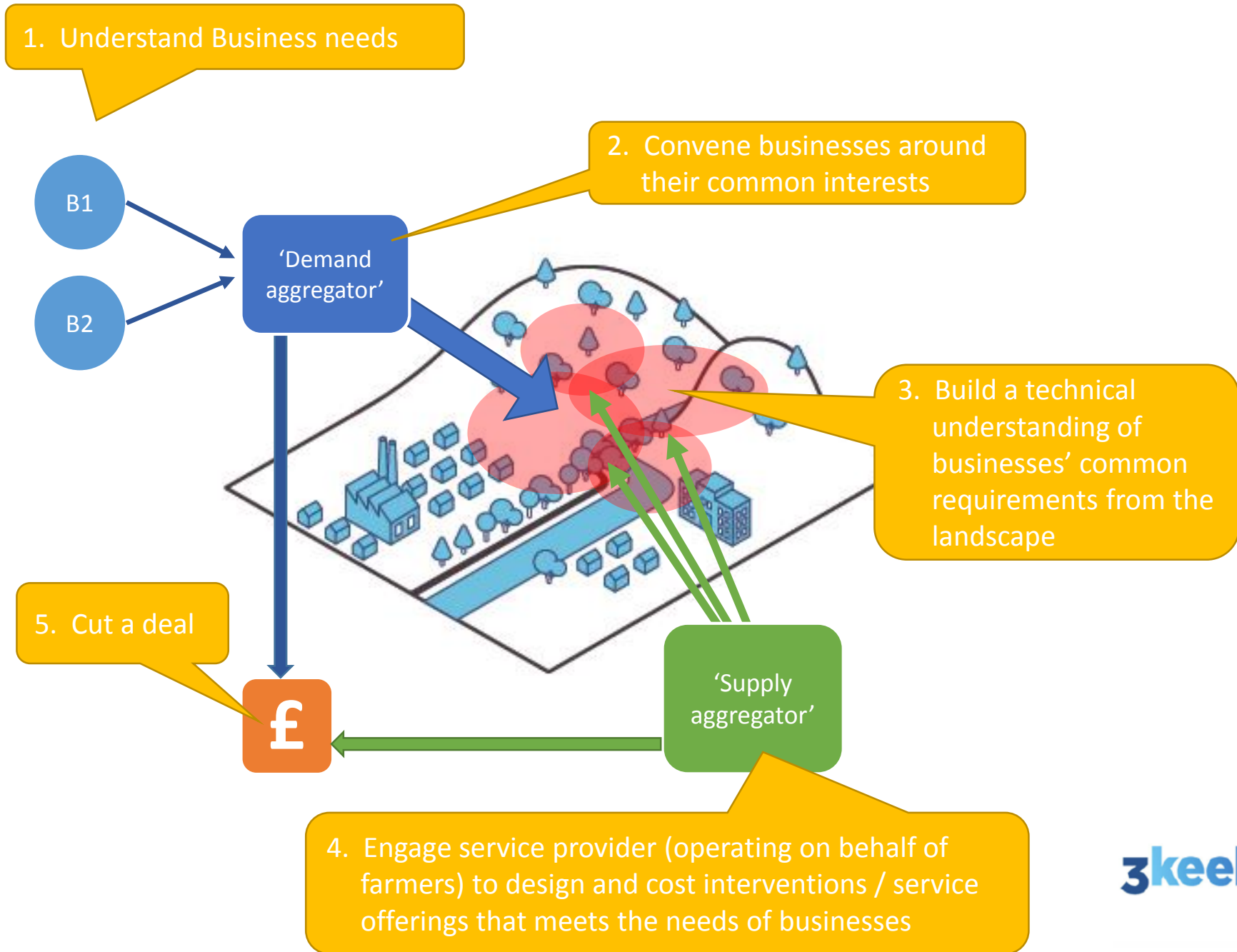
# Eden Catchment Market

Natural Capital Trading Platform

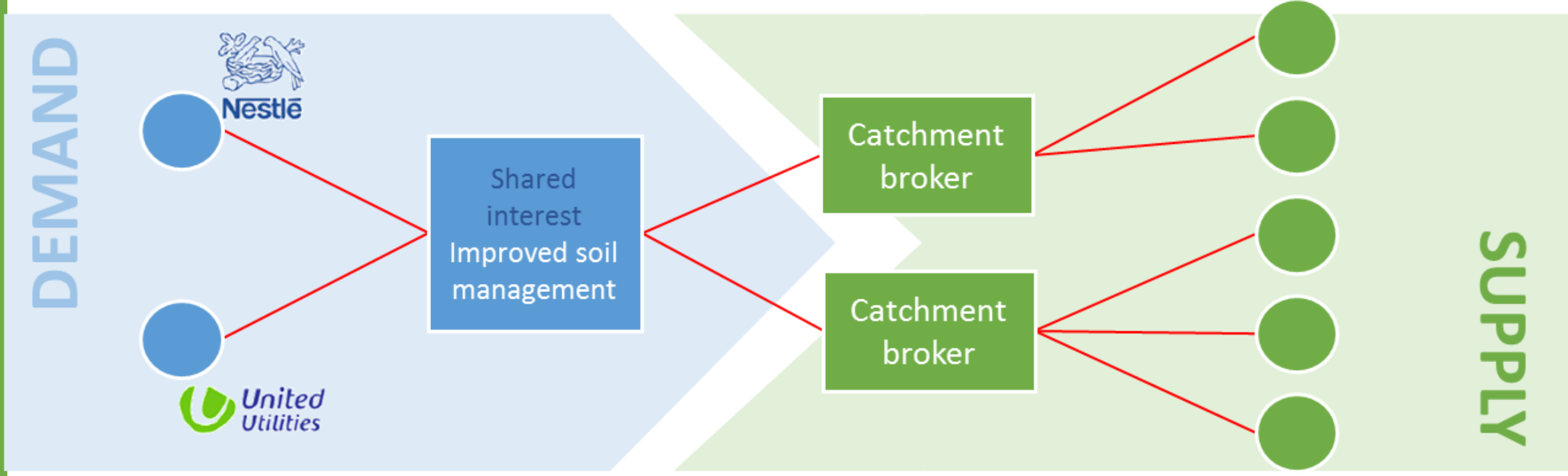




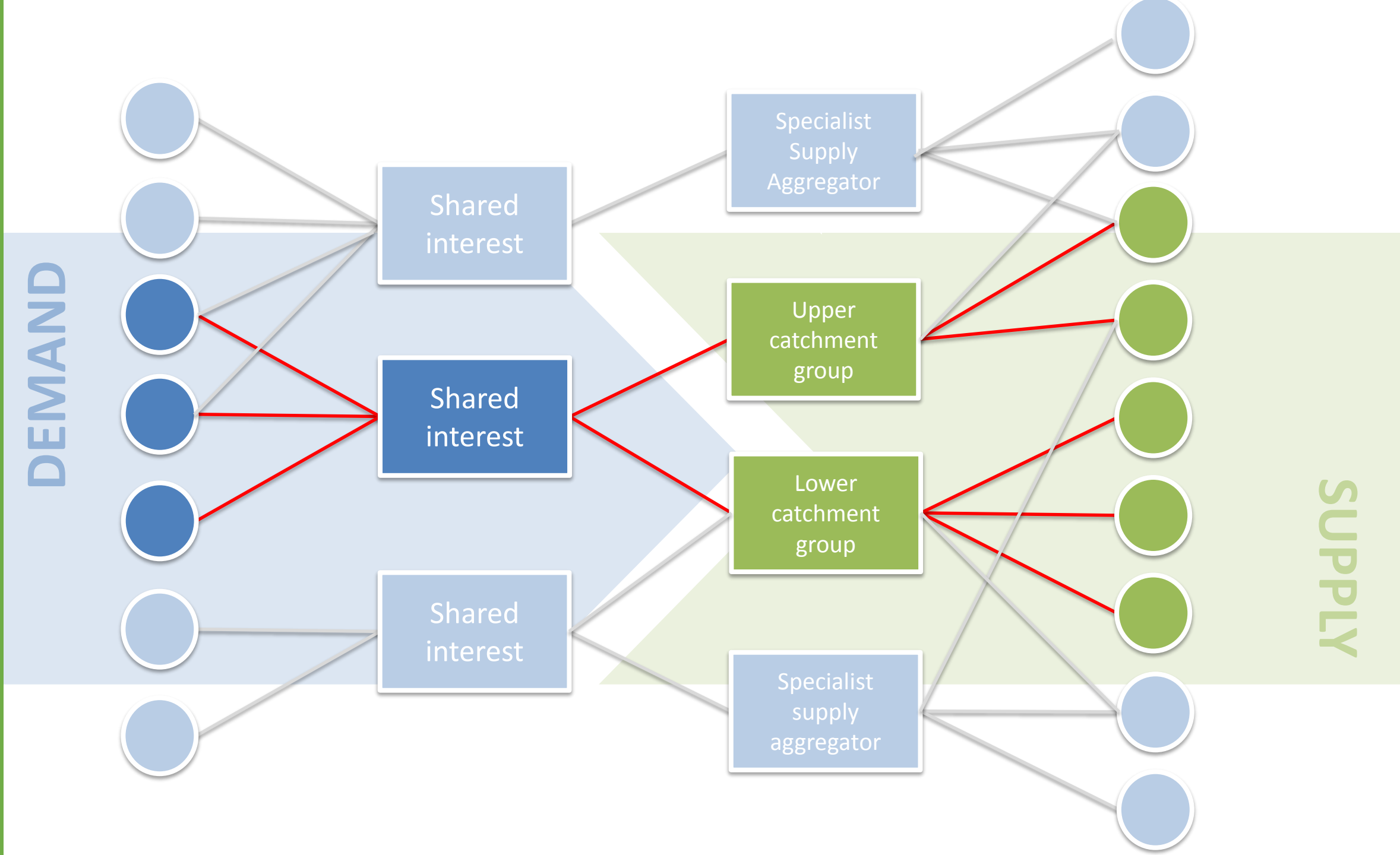
# LENS – Landscape Enterprise Network



# Pilot Concept



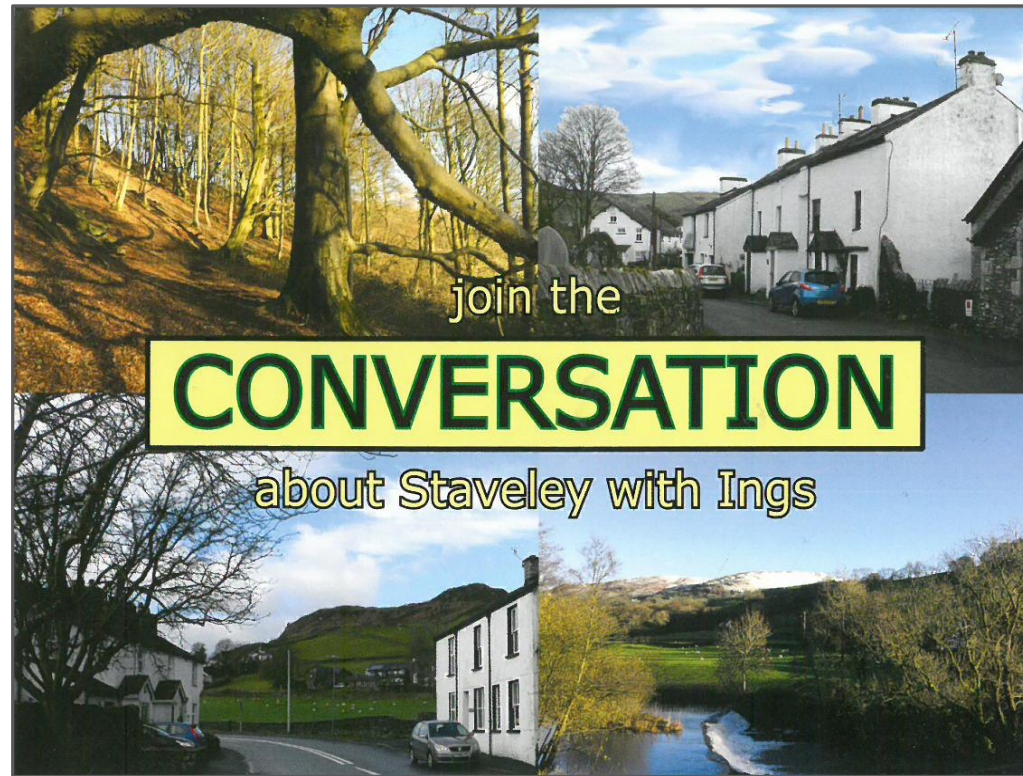
# Future Development





# Staveley Parish Plan

Local decision making



# Staveley – Place based decision making



Learning –  
driving force

A better environment  
for the next generation

Learning –  
quick fixes = trust

Learning –  
language

The  
Staveley  
Parish  
Plan





# Staveley – The story

25  
YEAR  
PLAN |  Department  
for Environment  
Food & Rural Affairs

Learning –  
small amount  
of money

join the  
**CONVERSATION**  
about Staveley with Ings

join the  
**CONVERSATION**  
about Staveley with Ings

Staveley with Ings Parish Council invite you to join the

## CONVERSATION

Come and:

meet those who visit, work and live in the parish  
chat over a free meal of locally prepared food  
share what is important to you about Staveley and Ings  
inform plans and developments for the next 25 years

Sign the list at Staveley  
Pharmacy or at the Watermill  
Or turn up on the night  
Places are limited

6th March 2019 at Cafe Eclec (6.30-9.00)  
12th March 2019 at Wilf's (12.00 - 14.30)  
13th March 2019 at The Watermill (7.00-9.30)  
More dates to come!

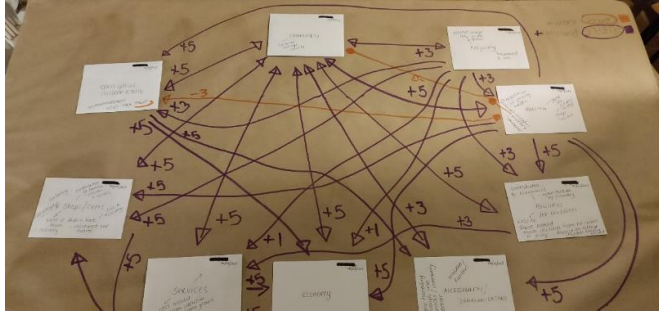
Supported by Dr Darrell Smith, University of Cumbria





# Staveley – The community view

Learning – history and past, their world, setting and context





# Windermere

## Systems Mapping



# Windermere – Complex catchment

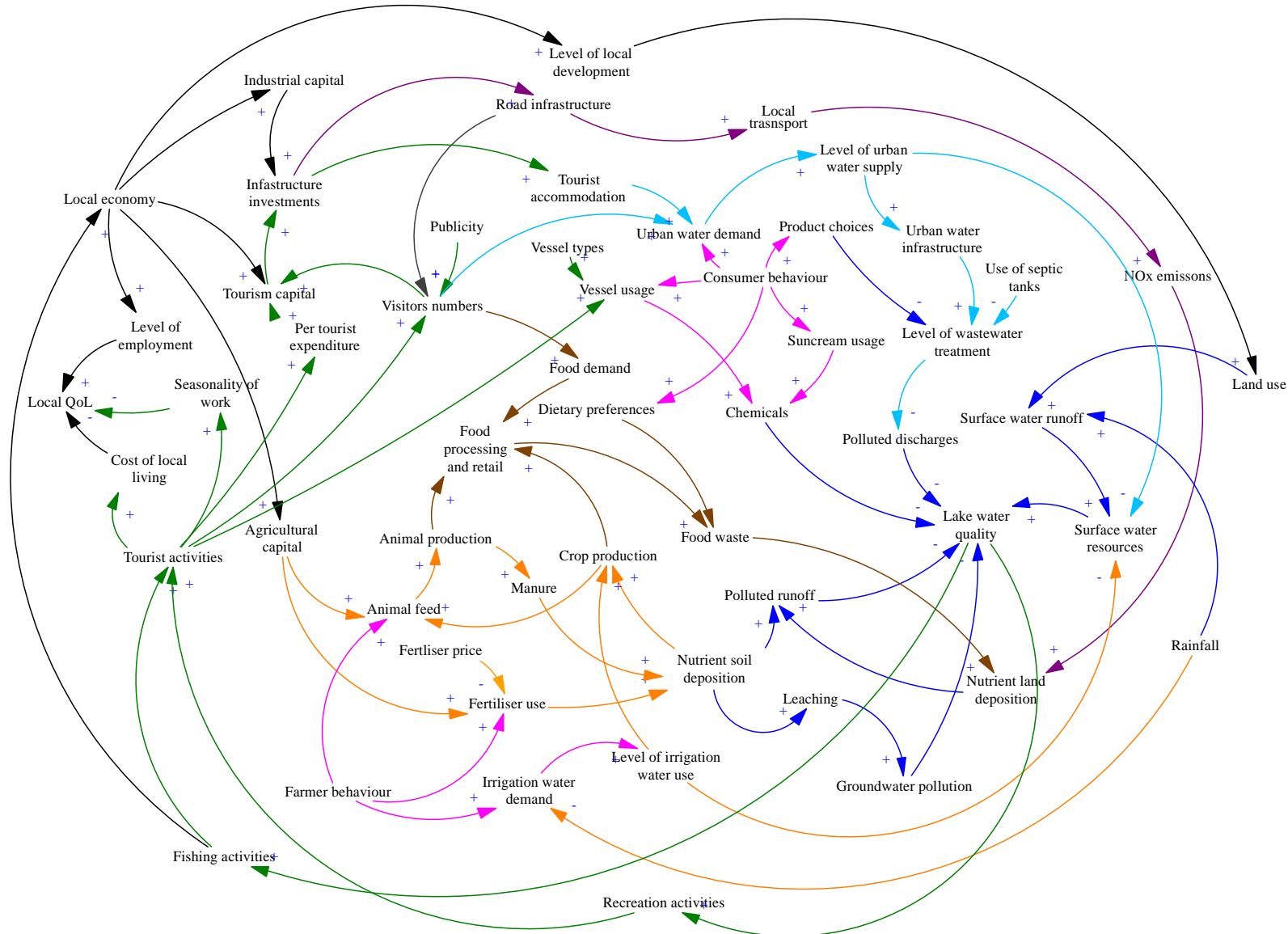
## The problem

Catchment scale pressures resulting from human activities are causing deterioration of the overall condition (and resilience) of Lake Windermere and the River Leven

## Impacts

This presents substantive risks to communities and businesses that depend on the quality of Windermere's unique natural capital and a challenge for stakeholders that deliver the services which support a water based economy of local, regional and national interest.





# Other Pioneer Projects

Testing new tools and methods as part of a Natural Capital Approach

- Area Integrated Plans (EA,NE,FC)
- Local Natural Capital Plans
- State of the Park (LDNPP)
- National Natural Capital Baseline (EA)
- Transfer Trails – Bristol Avon

Pioneering and ‘scaling up’ the use of new funding opportunities

- West Cumbria Futures (NE)
- Living Coast (NE)
- Mobilising More Money (EA)
- Ullswater Natural Infrastructure Scheme (National Trust)
- Lake District Foundation

Demonstrating a joined-up, integrated approach to planning & delivery

- Catchment Plans (EA,NE,FC)
- Catchment Management Groups
- Joined up consenting (EA,NE,LDNPA)
- Effective Ways of Working (DEFRA)
- Thirlmere and St Johns Beck (EA, UU, NE)
- Forgotten Lands (FC)

Grow our understanding of what works, share lessons best practice

- Evaluation (EA, DEFRA)
- Project Management (EA)
- Communications (EA, DEFRA)
- Events and workshops (UoC)
- Policy linkages (EA, DEFRA)