

Using Nature to Reduce Floods

Stroud Rural Sustainable Drainage Project



Rosemary McCloskey – Project Officer

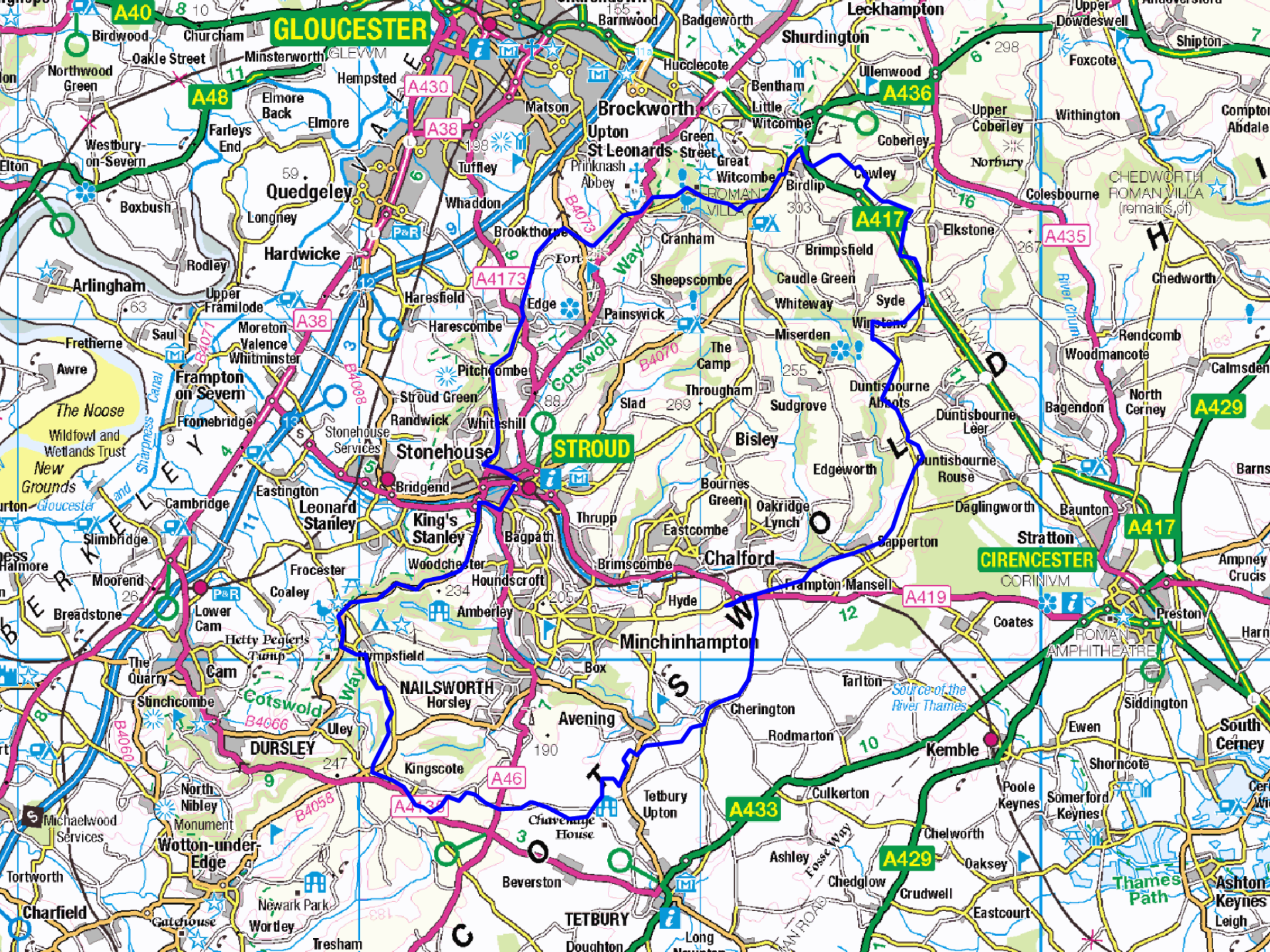


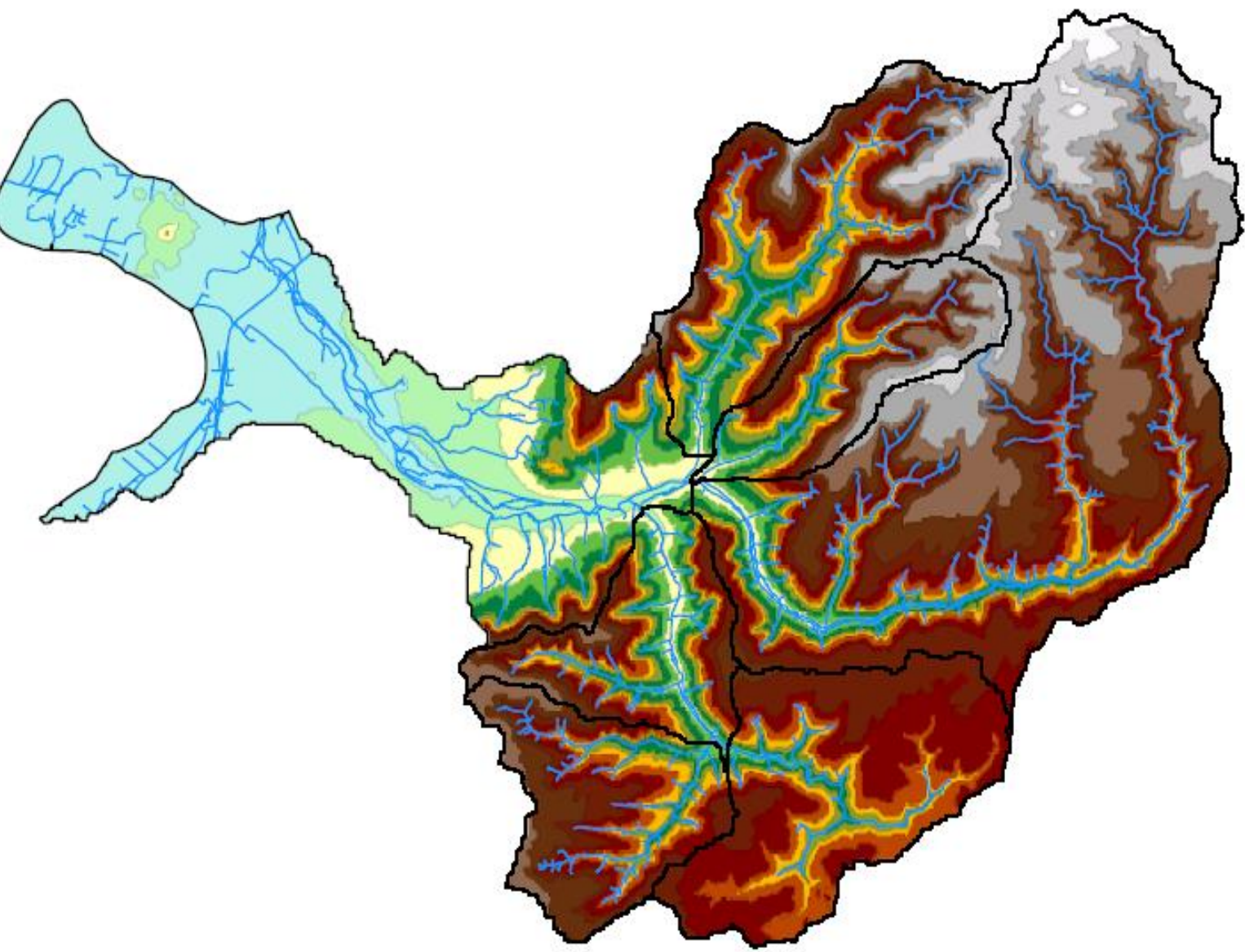


Flooding in Stroud 2007

Project Background

- Developed as a pilot project with a strong community driver
- English Severn & Wye RFCC support. Project Officer funded through Local Levy, employed through SDC. Initially a 3 year post in 2014 now extended to 2020.
- Strong partnership: Project hosted through Stroud DC, works closely with EA, Gloucestershire County Council (LLFA) Wildlife Trust, National Trust, Natural England, Private Landowners.
- Capital project contributions from RFCC (Local Levy), GCC (LLFA), SDC(RMA), Landowners and NGOs.





— River Network

Elevation (mAOD)

- 0 - 20
- 20 - 40
- 40 - 60
- 60 - 80
- 80 - 100
- 100 - 120
- 120 - 140
- 140 - 160
- 160 - 180
- 180 - 200
- 200 - 220
- 240 - 260
- 260 - 280
- 280 - 300

0 1 2 4
Kilometres

The Axis
10 Holiday Street
Birmingham, B1 1TP
+44 121 483 5000
www.atkinsglobal.com

CLIENT



PROJECT TITLE

River Frome Rural SuDS Pilot Study

TITLE

Figure 2:
Catchment Topography

© Crown copyright and database rights,
2013, Ordnance Survey 100026380.

SCALE	DRAWN	CHECKED	AUTHORISED
1:57,000 at A3	PM	DOT	JG
REP NUMBER	DATE	DATE	DATE
511785281.DG002	11/03/2013	12/03/2013	12/03/2013

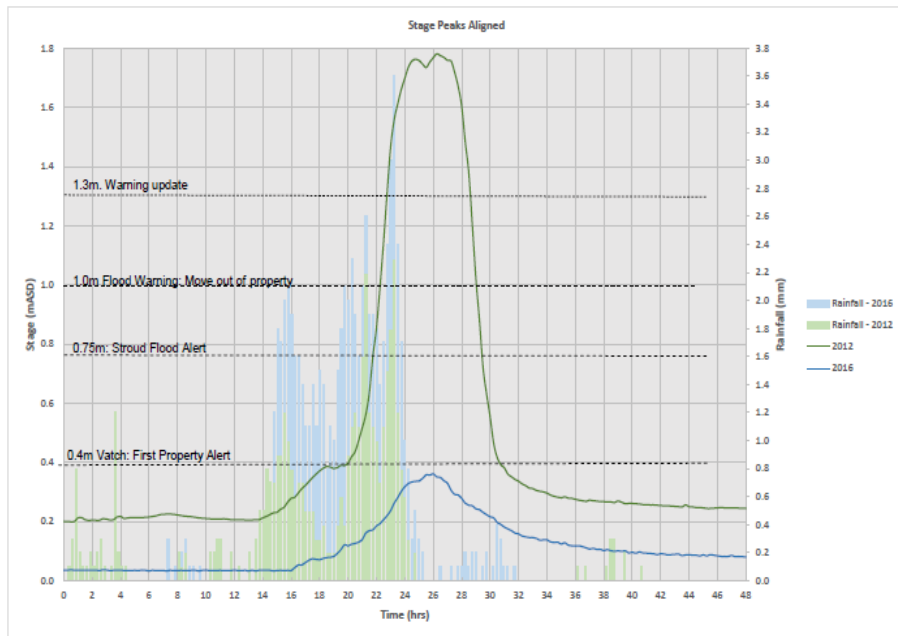
Examples of techniques used



Demonstrating & Sustaining the Benefits of NFM

Challenge 1: The value of NFM

- Demonstrating the value/benefit: What is appropriate?
- Can we equip and empower communities to demonstrate the benefits of NFM?
- Case study sites and champions
- Multiple outcomes; a holistic approach
- Natural Capital “Valuation”



Demonstrating & Sustaining the Benefits of NFM

Challenge 2: Community engagement and landowner relationships

- Co-designed with the landowners and community groups
- Utilising local skills and labour
- One point of contact/reference
- What does meaningful participation look like?
- Celebrating/recognising public participation
- Minimising risk: A network of many low risk projects



Demonstrating & Sustaining the Benefits of NFM

Challenge 3: Standard Practice Integration

- Sharing and demonstrating the learning and skills
- Integrating NFM into Land and Woodland Management Plans
- Inter-agency collaboration and partnership working
- NFM influencing local policy & strategy
- NFM and ELMS

Many thanks!

