

Collingham Beck

Natural Flood Management Defra Pilot Project

iCASP NFM Community of Practice

11 September 2019

Emma Wren



Overview

1 Why are all of us here?

2 What have we done?

3 What have we achieved?

4 What is next?

Why are all of us here?



How did we get here?



- An opportunity to combine two of my passions
- Defra NFM Competition
 - £50k of funding as community project
 - Mott MacDonald CSR support



Collingham Beck

- Drains to River Wharfe at Collingham
- 30 km²
- Villages of East Keswick, Bardsey, Collingham, Scarcroft and Shadwell.
- Mixed land use including pasture, arable, some woodland and golf courses



Interlinked issues



Water quality



Sediment erosion



Habitats & biodiversity



Flow

1%

44 properties at flood risk from Collingham Beck

Others across catchment

Local roads and A58

0.1%

119 properties at risk from Collingham Beck

Others across catchment

A58 and A659 in Collingham

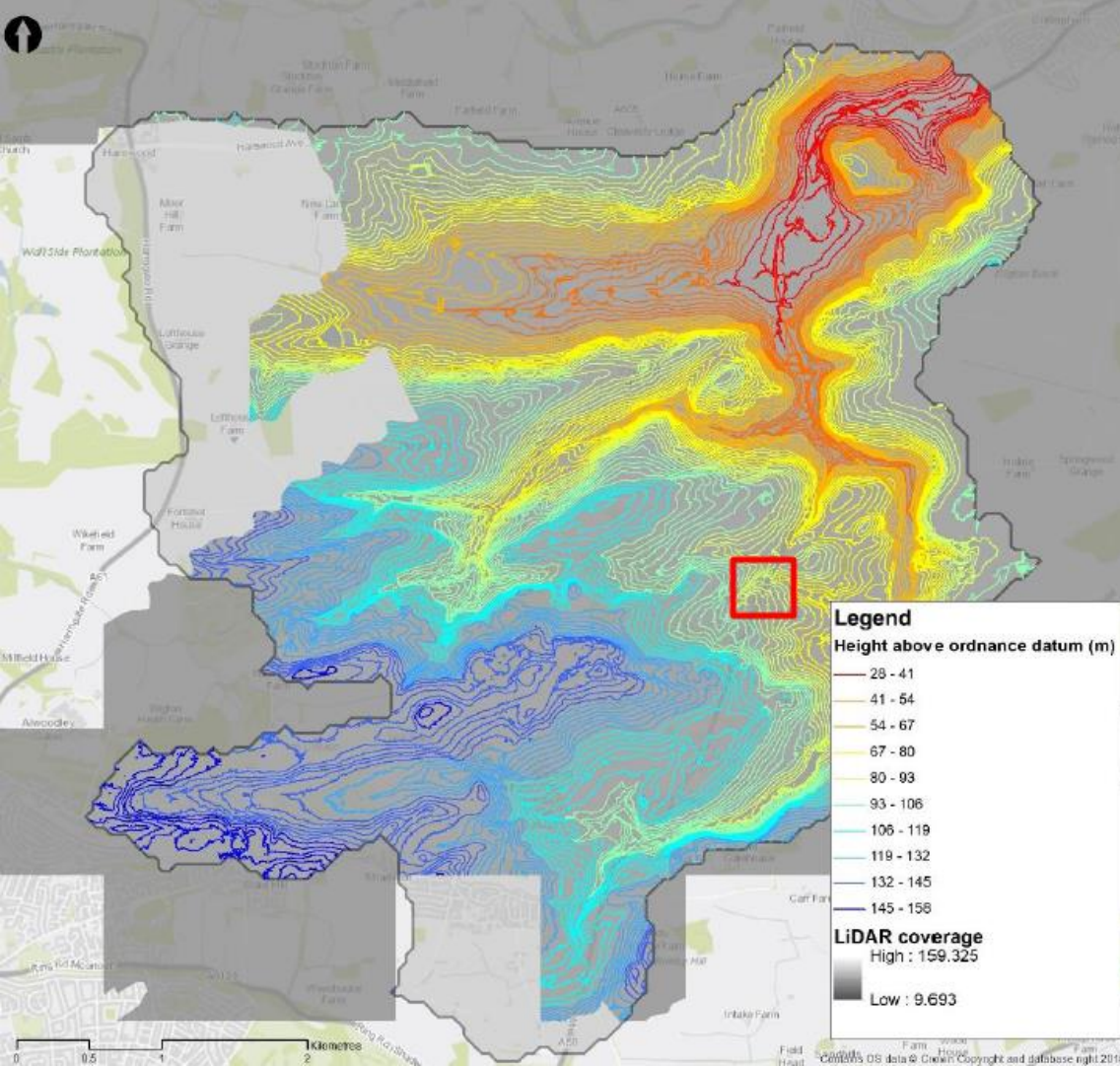


What have we done?

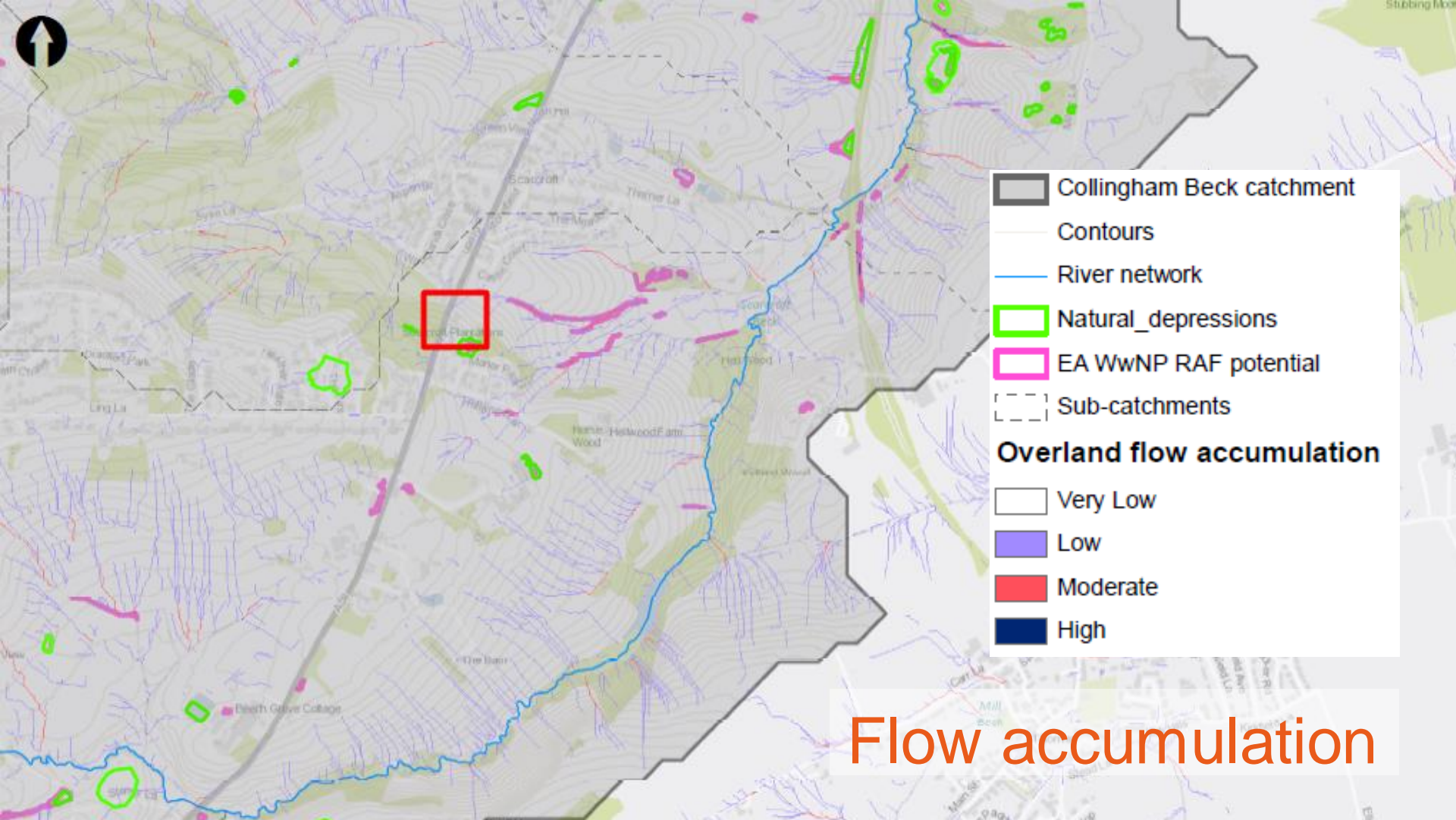


Catchment walkovers
and engagement

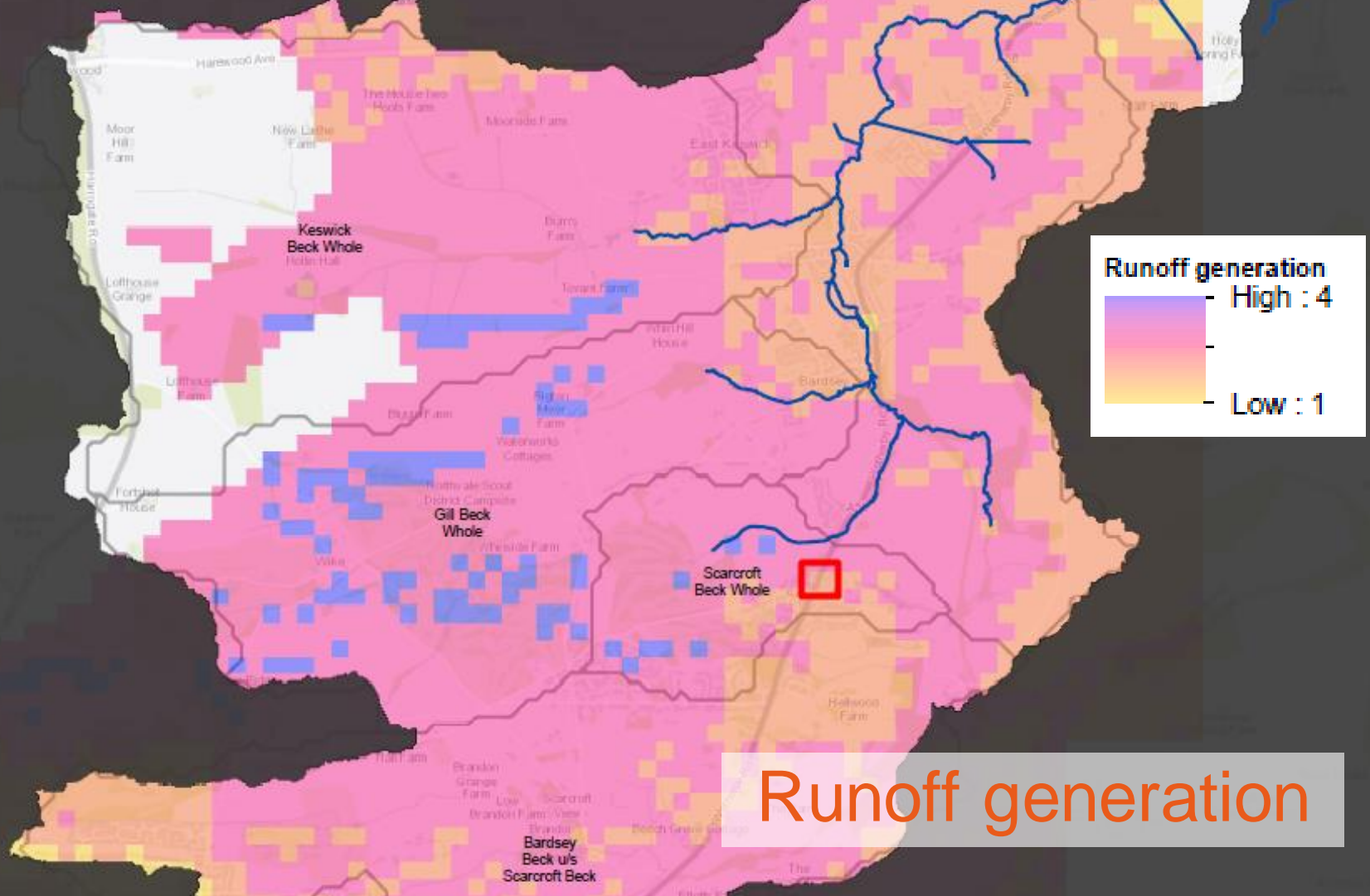


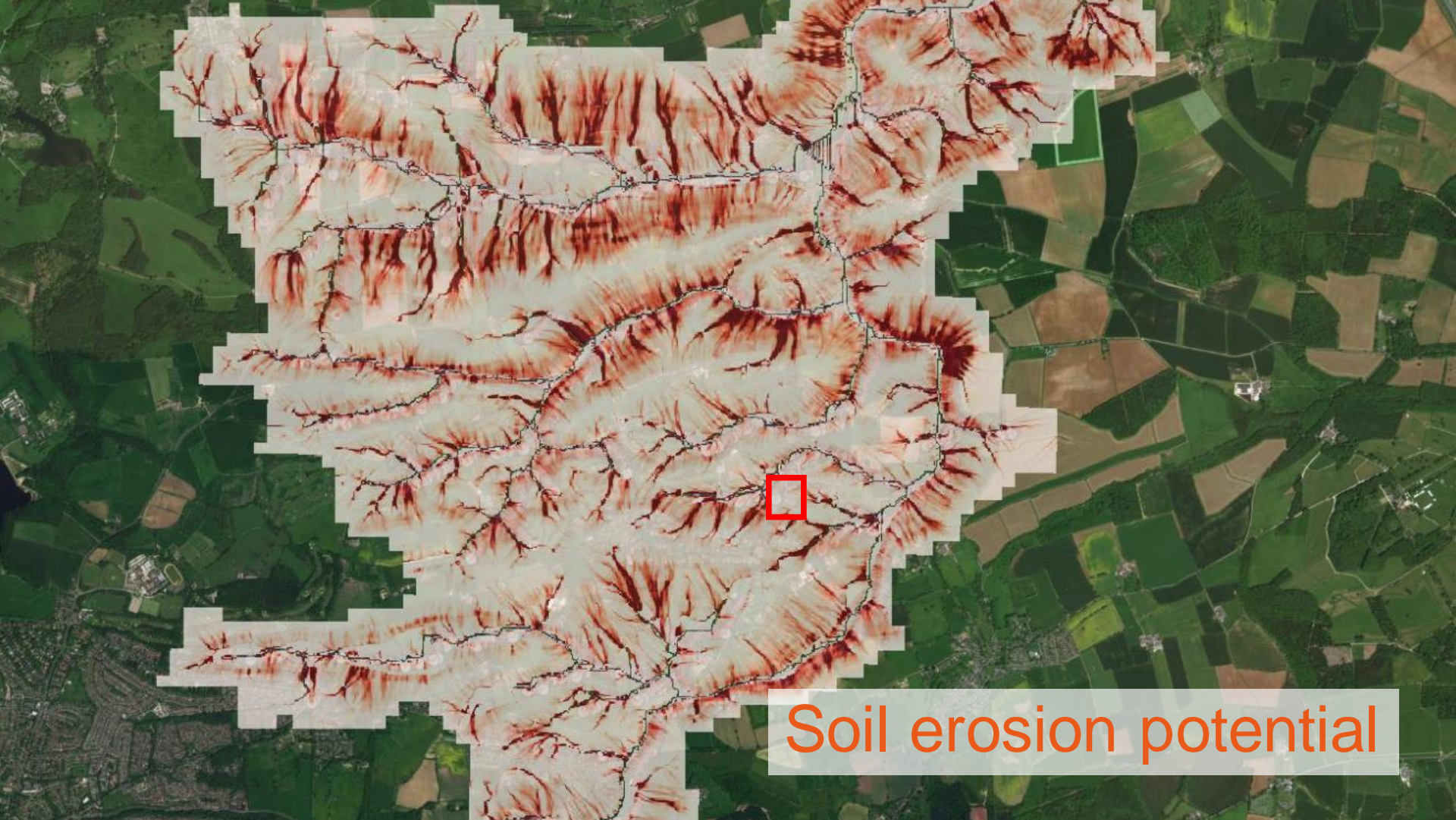


Contour analysis

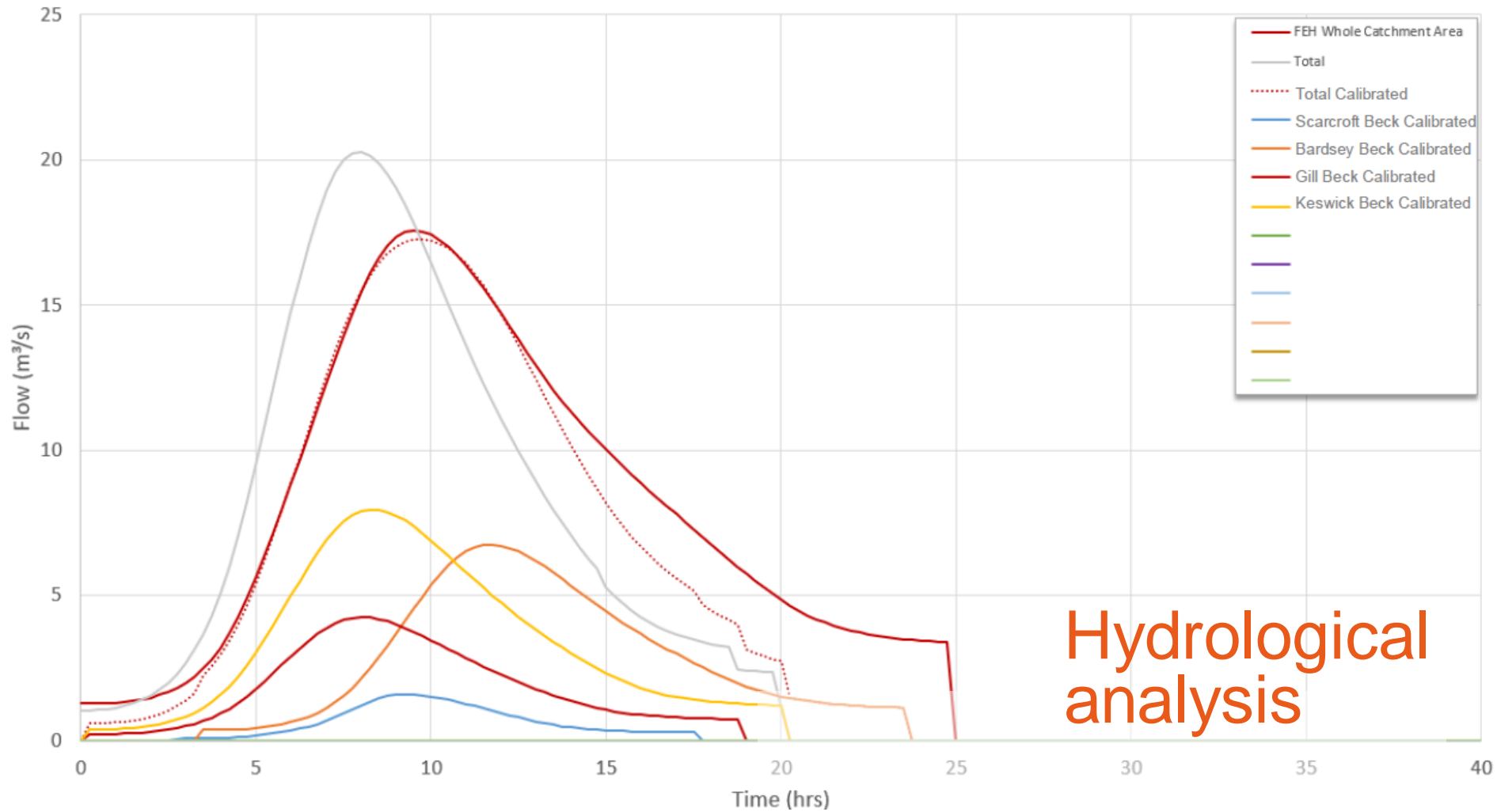


Flow accumulation





Soil erosion potential



Hydrological
analysis



Got stuck in!

What have we achieved?

Measures on the ground

- 12 leaky dams
- 1200 trees
- 400m hedgerow
- 2.5km riparian fencing



It can be done!

- Successful partnerships
- Linking multiple issues
- Raising awareness in the community
- Much more potential



What is next?

More in the pipeline

- Other partners
- More landowners keen
- Community action day planned
- Increasing awareness – farm trail
- More MM NFM days this winter
- Adding to the evidence base



Emma Wren

Principal hydrologist

E emma.wren@mottmac.com

T 0113 394 3371

W mottmac.com

